

OmniPeek[®]

Network Analysis Software

OmniPeek solutions enable businesses to:

- Gain unprecedented visibility into networks and applications
- Accelerate find-to-fix times
- Discover and close network security gaps
- Maximize ROI on existing networks and applications
- Increase IT efficiency and responsiveness
- Reduce costs associated with network downtime and service degradation
- Reduce IT labor costs
- Increase end user productivity

The Challenge

Enterprises and service providers depend on reliable network performance. Configuration errors, network faults, and security attacks can jeopardize operations, user experience, and the bottom line.

To keep networks performing optimally, engineers need to be able to continuously monitor their networks and quickly troubleshoot problems wherever they occur. They need real-time analysis for every type of network segment— Ethernet, 1/10/40 Gigabit, 802.11, and voice and video over IP—and for every level of network traffic, including spikes in usage.

These analysis capabilities must be available 24/7 in an easy-to-deploy, easy-to-use solution.

The Solution: OmniPeek[®] Network Analysis Software

Serving a dual role as both a portable network analysis solution and as a software console for Savvius Omnipliances, OmniPeek[®] offers an intuitive, easy-to-use graphical interface that engineers can use to rapidly analyze and troubleshoot enterprise networks.

OmniPeek provides centralized Expert analysis for all networks under management. Using OmniPeek network analyzer's intuitive user interface and "top-down" approach to visualizing network conditions, network engineers can quickly analyze faults from multiple network segments, drill down through multiple layers of analysis, and pinpoint problems that need correction.

Using OmniPeek, network engineers can:

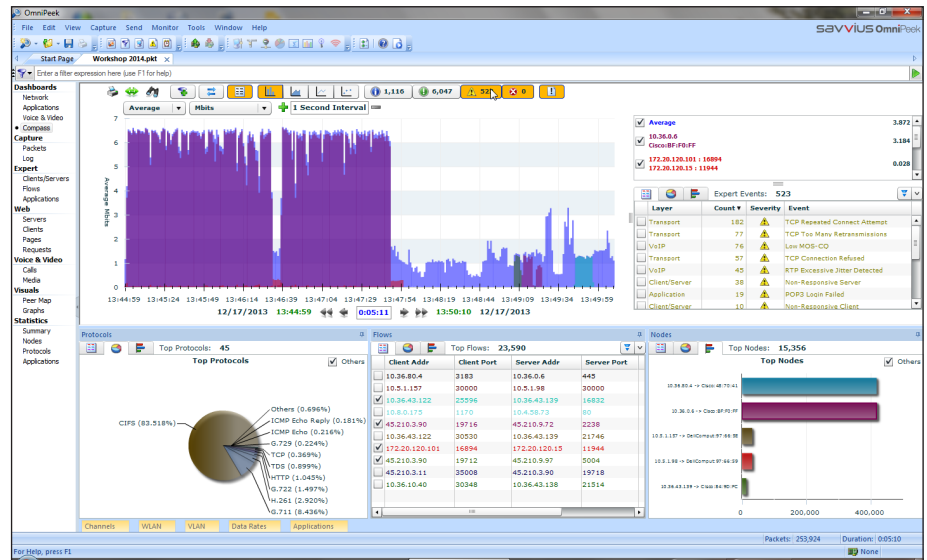
- Analyze traffic from any local network segment, including Ethernet, 1/10/40 Gigabit, 802.11, and voice and video over IP, as well as any network segment configured with Capture Engines for OmniPeek or Omnipliance[®] network capture and analytics appliances.
- Capture and analyze 802.11n and 802.11ac wireless traffic from already deployed access points from Cisco, Aruba, and other leading vendors.
- Classify and analyze Layer 7 application traffic.
- Monitor networks, application performance, and multimedia in separate high-level dashboards, and drill down to see which traffic characteristics are affecting performance.
- Use OmniPeek's interactive dashboard to monitor key network statistics in real time, including flows, latency, Expert analysis, and files, then quickly drill down for detailed analysis.
- Capture and analyze data from multiple local network adapters, multiple distributed Capture Engines, multiple network analysis and recorder appliances and Omnipliance appliances, or any combination of local and remote data.
- Visualize end-to-end, hop-by-hop traffic changes through correlated analysis from multiple Capture Engines or appliances using multi-segment analysis.
- Monitor voice and video over IP traffic in real-time including high-level multimedia summary statistics, and comprehensive signaling and media analyses.
- Gain complete visibility into voice and video over IP traffic with real-time call data records (CDR).
- Decrypt WEP, WPA/PSK, WPA2 Personal, and SSL packets.
- Understand the context of network events from real-time Expert analysis.

- Receive alerts when specific Expert events occur, or when configured network policies are violated.
- Change filters on the fly without having to stop and restart network traffic captures.
- View packet-based analytics by conversation pair, instantly locating network events.
- View web traffic, the most common data type on the network, in conversational flows based on client, server, web pages, or web requests.
- Monitor MPLS and VLAN networks.

Top-Down View

OmniPeek provides a high-level view of both network and application traffic through its comprehensive dashboard view and deep packet inspection capabilities. Dashboards display important data that every network engineer needs to know about the network without spending lots of time analyzing the captured data.

With OmniPeek, you can also drill down and see which nodes your top talkers are talking to. Click again and see what protocols and subprotocols are in use. IT staff of all levels of technical ability can view this information instantly, anywhere on the network. OmniPeek also provides a wide range of reports in various output formats to keep executives informed of overall network performance.



Dashboards provide visibility into all network traffic with drill-down capability to packets.

Interactive Real-Time and Post-Capture Analysis

The OmniPeek Compass dashboard provides an interactive view of key network statistics, which can be graphed, dynamically correlated, and reported on. With its unique ability to aggregate traffic from multiple segments, Compass provides network engineers with comprehensive visibility and insight into their networks.

Compass provides interactive visualization of traffic by packets, bandwidth, and latency, with tight integration to Expert events, for easy and instant investigation into the behavior of nodes, protocols, and individual flows. With a single click, Compass views can even be converted into filters and reports.

Unique Flexibility

Of all standalone network analysis products available today, only OmniPeek enables network engineers to monitor multiple parts of the network simultaneously—an important capability when engineers know there is a problem but have not determined where exactly it is.

Visual Expert

The Visual Expert answers the question “Who is talking to whom?” by providing comprehensive visual data about network, media and application traffic, along with expert diagnoses of common and not-so-common network problems. The Visual Expert makes it easier to understand what is happening on the network and how to remedy problems by providing a “top-down” view of network activity.

Visual Expert includes Packet Visualizer, payload reconstruction, a wide range of conversation-oriented graphs, optimization tuning by playing “what if” with key network parameters, packet-by-packet comparison between multiple saved capture files—very useful in comparing the traffic from the wireless and wired side of an access point, and a detailed summary panel.

Expert Analysis

OmniPeek displays Expert analysis diagnoses by conversation pair, so you can instantly identify where problems are occurring on the network.

Multi-Segment Analysis

Isolate sources of network latency and packet loss, as well as tracking network addressing changes such as TTL and NAT, by consolidating and correlating analysis data from multiple segments.

The Application Performance dashboard displays user satisfaction scores for the applications on all segments of your network.

Multi-segment analysis correlates and analyzes network traffic across multiple network hops.

Deep integration means that multi-segment analysis can be performed as easily on real-time traffic as it can on pre-captured files. Reduce your troubleshooting time by identifying the problem within your network based on packet-level data, not just device stats.

Voice and Video Analysis

To deploy and maintain a successful voice and video over IP implementation, you need to be able to analyze and troubleshoot media traffic and the network the media traffic is running on, simultaneously. You need to be able to understand how other applications are affecting media traffic—and vice versa.

OmniPeek Enterprise provides users with the visibility and analysis they need in order to keep voice and video applications and non-media applications running optimally on the network. Users gain access to the entire voice and video over IP network in a single view, including a wealth of detailed call quality statistics, graphical representations of the media traffic and detailed diagnostic information. Specific voice and video media, signaling, call playback, and call data record (CDR) capabilities are also included.

End-User Experience

Capture Assistant for OmniPeek is a small, easy-to-use application that enables help desk and technical support personnel to capture network data directly on end-user devices.

The simple user experience reduces user confusion, allowing non-technical users to collect data, while providing valuable troubleshooting information. The resulting capture files are protected using public/

private key encryption, so the help desk can see what the user sees, but no one else can.

MPLS and VLAN Analyses

For organizations adopting MPLS and VLAN, the OmniPeek network analyzer captures MPLS and VLAN traffic and provides important statistics, such as total packets and total bytes per MPLS/VLAN. All MPLS/VLAN statistics can be graphed over time providing a detailed view of the MPLS/VLAN network to the user. Alarms can be set on these statistics to notify the administrator as soon as a problem occurs.

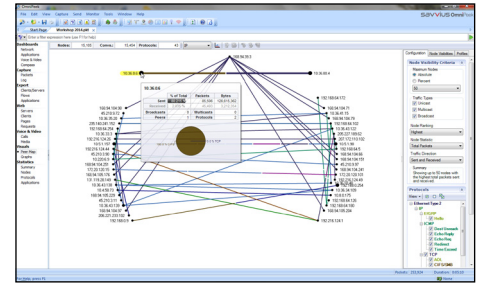
On-the-Fly Filters

You should not have to stop analysis simply to change what you are analyzing. With OmniPeek, you can create filters and apply them immediately. The Savvius “select related” feature selects the packets relevant to a particular node, protocol, conversation, or Expert diagnosis, with a simple right click of the mouse. Advanced filters use either visual logic or tcpdump/ bpf format to isolate suspect traffic into a new tab, allowing quick analysis without disrupting your troubleshooting. Save your filters for future use to create site-specific tools for you and your team.

Features like these significantly reduce the time needed to find and fix problems. Similar operations often take a dozen or more steps in other analyzers.

Alarms and Notifications

Using its advanced alarms and notifications, OmniPeek uncovers hard-to-diagnose network problems and notifies users of issues immediately. OmniPeek alarms query a specified monitor statistics function once per second, testing for user-specified problem and resolution conditions. Upon matching any of these tests, the alarm function sends a notification of user-specified severity. The level of severity can be set to indicate the importance of the notification. Notifications can be sent as log, email, execute, sound, syslog, and SNMP trap.



The Peer Map shows network conversations between all nodes, making it easier than ever to identify communication patterns.

Global Real-Time Troubleshooting

OmniPeek extends real-time troubleshooting to network segments around the world, delivering Expert analysis, detailed node, protocol, and network summary statistics, and even packet decoding, on multiple segments, by multiple users, in real time. From one application, a network engineer can cost-effectively follow the packet path, troubleshoot, and locally view Capture Engine Expert analyses and other detailed statistics from Capture Engine for OmniPeek software probes or Omnipliance network analysis and recorder appliances down the hall, across the country, or around the globe.

Comprehensive Network Coverage

OmniPeek gives network engineers real-time visibility into every part of the network—simultaneously from a single interface—including Ethernet, 1/10/40 Gigabit, 802.11, and voice and video over IP.

Using OmniPeek’s local capture capabilities, centralized console, distributed Capture Engine intelligent software probes, Omnipliance network analysis and recorder appliances, and Expert analysis, engineers can monitor their entire network, rapidly troubleshoot faults, and fix problems to maximize network uptime and user satisfaction.

OmniPeek Product Line

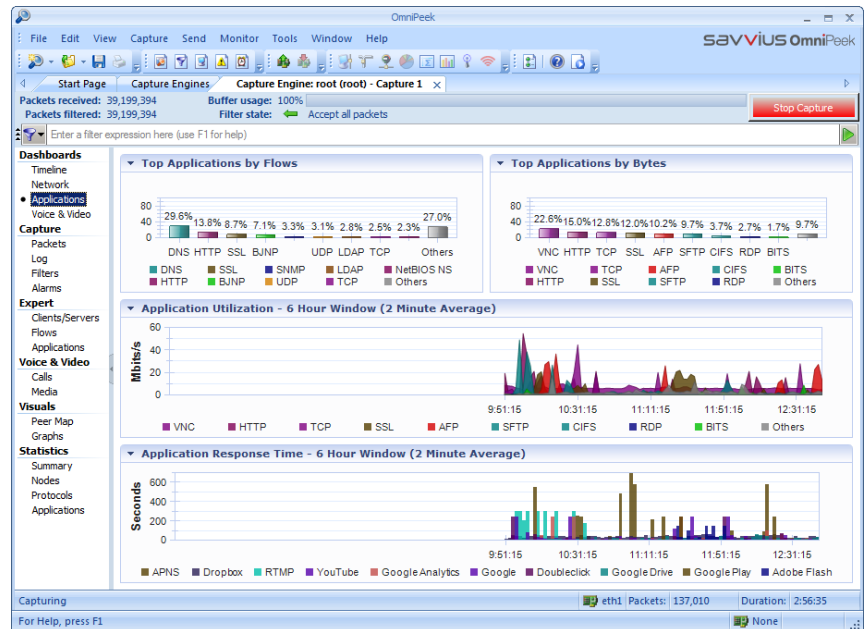
OmniPeek Enterprise

OmniPeek Enterprise is Savvius's flagship product. It combines all of the features of the Savvius distributed network analysis solutions in a single product, including support for local captures from multiple interfaces and connections to an unlimited number of distributed Capture Engines and Omnipliance network analysis and recorder appliances.

OmniPeek Enterprise supports data collection from any network topology, along with correlated visualization through multi-segment analysis.

OmniPeek Enterprise also provides advanced voice and video over IP functionality including signaling and media analyses of voice and video, VoIP playback, voice and video Expert analysis, Visual Expert, and more.

OmniPeek Enterprise is ideal for IT organizations responsible for network analysis and network service level agreements (SLAs). A license of OmniPeek Enterprise should be considered for each location that will be supported by a network engineering professional.



Layer 7 Application Dashboard providing visibility into application details and performance.

OmniPeek Professional

OmniPeek Professional is a more limited version of OmniPeek that may be appropriate for small businesses and corporate workgroups, regardless of the size of the network or the number of employees.

OmniPeek Professional serves as both a full-featured network analyzer and a console for remote network analysis, while supporting up to two Capture Engines. The software can analyze an unlimited number of network flows, so groups of any size can be supported.

OmniPeek Connect

OmniPeek Connect manages an organization's Capture Engine instances, and provides all the console capabilities of OmniPeek Enterprise. OmniPeek Connect is ideal for Network Operations Center (NOC) deployments as it can monitor distributed analysis solutions at multiple remote locations, where there is no need for local captures at the console location.

About Savvius

Savvius, Inc., a leader in packet-level network analytics and security forensics, enables network and security professionals to identify, understand, and respond to challenges in network performance and security. Savvius, formerly WildPackets, has sold products in more than 60 countries and all industrial sectors. Customers include Apple, Boeing, Cisco, Deutsche Telecom, Fidelity, Microsoft, Nationwide, and a high percentage of the Fortune 1000. Savvius is a Cisco Solution Partner. For more information, please visit www.savvius.com.

savvius

Savvius, Inc.

1340 Treat Blvd, Suite 500
Walnut Creek, CA 94597

T (925) 937 3200

F (925) 937 3211

www.savvius.com

Try OmniPeek software:

https://www.savvius.com/product_trials