

Tuning Box v2.0

User Guide

In order to use this device safely and correctly, please read this manual carefully before operating it.

1. Introduction

The Skylane Optics® Tuning Box is used to set the wavelength of the Skylane Optics® Tunable DWDM XFP 50GHz (P/N: XFDTU0800H0D) and the Skylane Optics® Tunable DWDM SFP+ 50GHz (P/N: SPDTU080100D).

N.B.: The QSFP+ is not supported on this tuning box please consult Skylane Optics for more information.

2. Packaging content

1. Tuning Box V2.0 (P/N: MISCE0020000000)
2. Power Supply AC 100-240V~50/60Hz to DC 5V 2.5A
3. USB 2.0 Cable

3. Important information

- The tuning box software is only compatible with Microsoft® Windows® XP / VISTA / 7 / 8.
- Please do not insert two transceivers at the same time.
- To turn the laser ON, it is necessary to plug the supplied external power supply.
- The drivers are automatically installed through Microsoft® Windows® Update™; it is mandatory to be connected to the Internet the first time you connect the box. In case of offline use, it is possible to download the drivers files on FTDI® website: <http://www.ftdichip.com/Drivers/VCP.htm>

4. Connect the Tuning Box to your computer

1. Connect the supplied USB 2.0 cable to the Tuning Box (1) and the other side to your USB 2.0 computer port (2).



Connectivity has never been this **simple**.

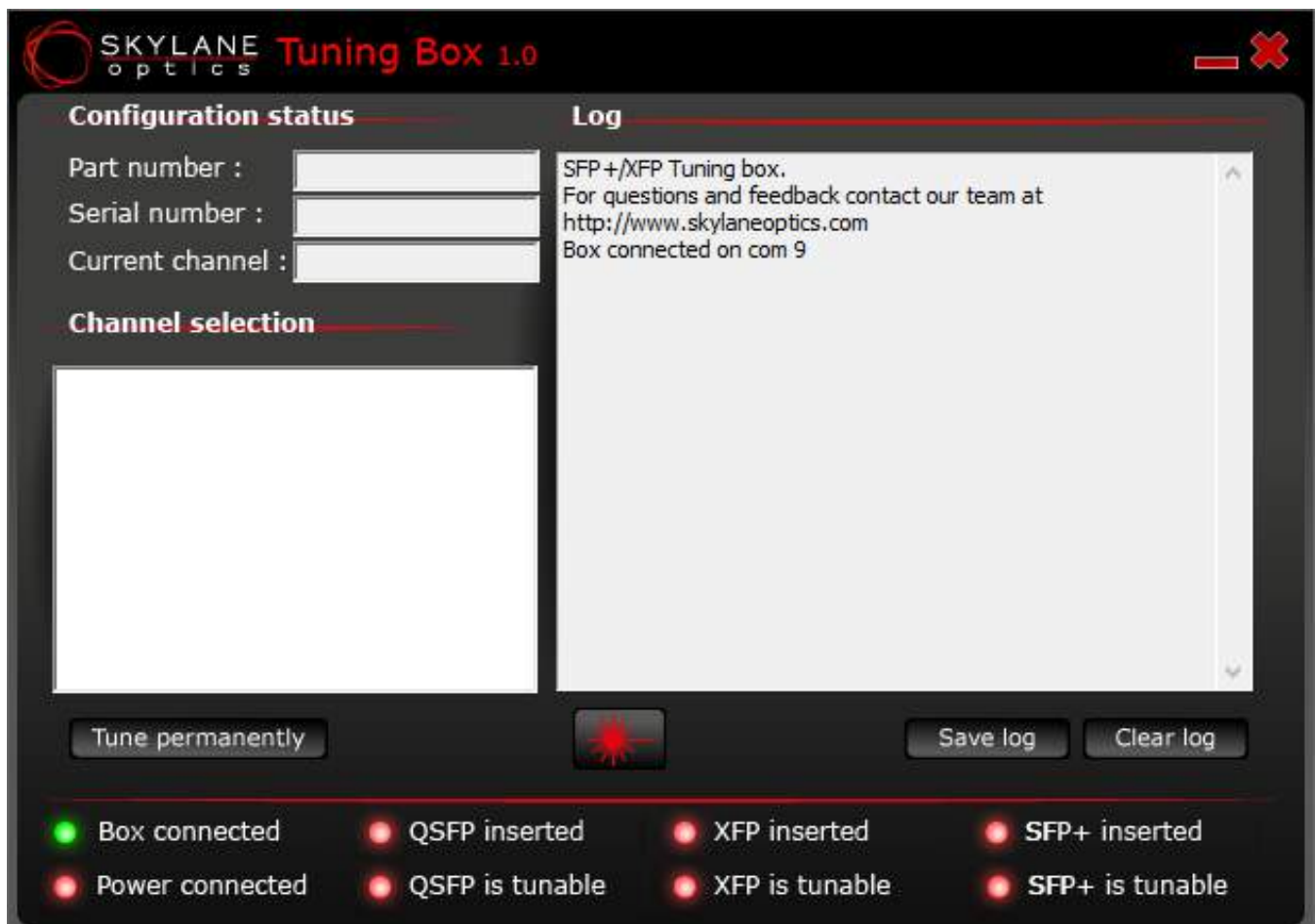
www.skylaneoptics.com

5. Install the software

1. Request the most recent version to your Skylane Optics contact or send an email to our Customer Service: customer.service@skylaneoptics.com
2. When received, click on the software in order to install it:
 - a. If your navigator asks if you want to "Run" or "Save" the file, select "Run"
 - b. If your navigator says that the publisher can't be verified, click on "Run"
3. Run the installation software
 - a. The installation wizard launches automatically.
 - b. When the wizard asks you to select the directory, keep the "as default" box ticked and click on "Install".
 - c. When the installation is finished, click on "Close"

6. Launch the Tuning Box software

1. Go to the Start menu > All Programs > Skylane Optics
 - a. Skylane Optics
 - b. Skylane Optics Website
 - c. Tuning Box
2. Launch the software by clicking on "Tuning Box", the following screen will appear:




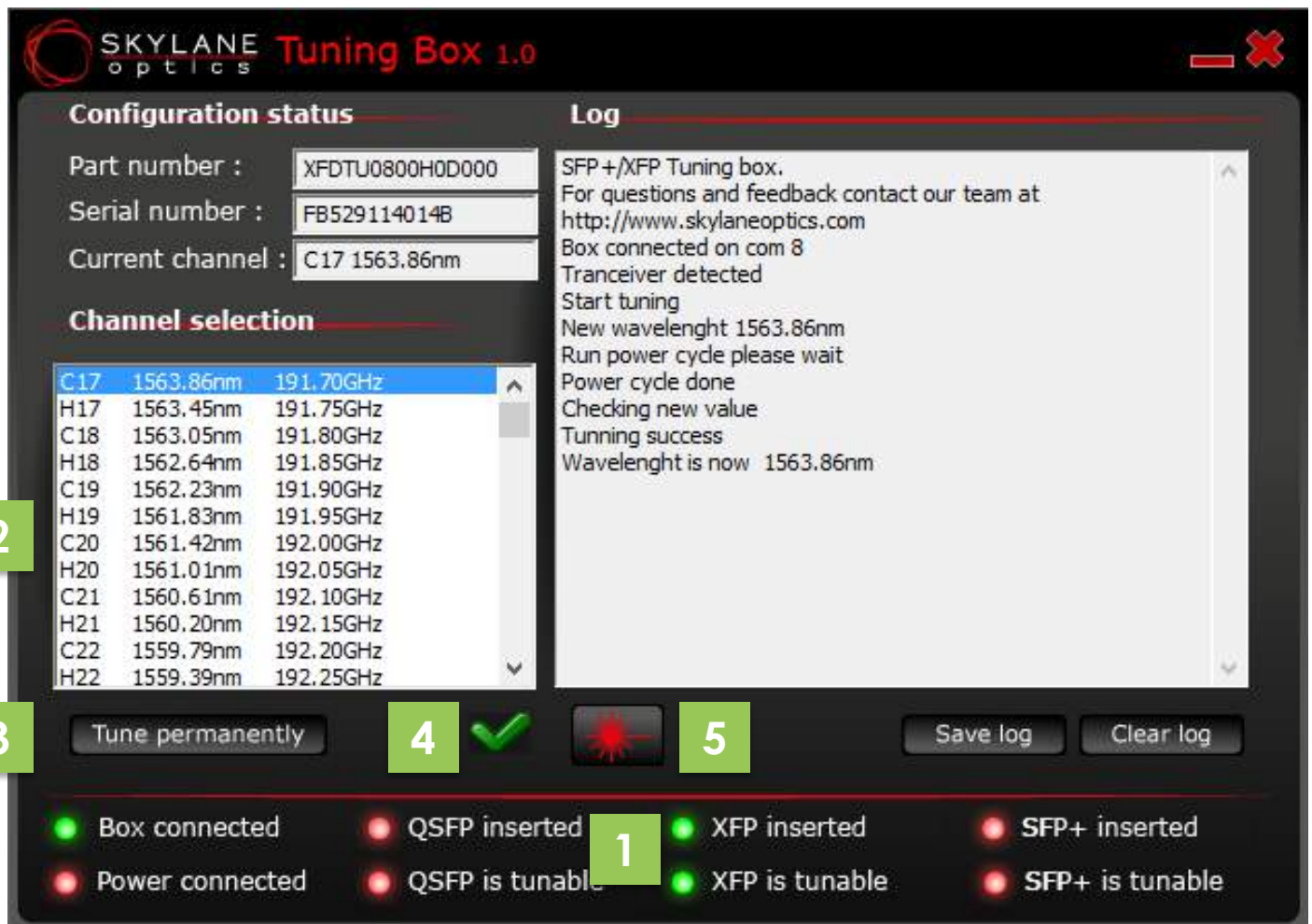
Tuning Box v2.0 User Guide

SK_Public_Rev2015_A

7. Use the software


Once the Tuning Box software is opened,

1. Insert the Skylane Optics® Tunable DWDM XFP 50GHz (P/N: XFDTU0800H0D) or the Skylane Optics® Tunable DWDM SFP+ 50GHz (P/N: SPDTU080100D) – If correctly inserted the red lights at the bottom will turn green. **(1)**
2. Select the desired channel (wavelength) **(2)**
3. Click on “tune permanently” **(3)**
4.  appears when tuning is finished **(4)**
5. Remove the transceiver
6. Tune another transceiver or close the Tuning Box Software.



Congratulations ! You successfully tuned your Skylane Optics® Tunable DWDM XFP / SFP+.

+ Turn ON the laser

1. Connect the AC-DC power supply to the Tuning Box
2. Click on  to turn ON the laser. Click again on it to turn OFF the laser. **(5)**

If you need support, please contact: customer.service@skylaneoptics.com