

SPIRENT LANDSLIDE

IP DATA TEST APPLICATION

Spirent Communications' Landslide® IP Data Test Application performs lab tests to measure the performance and accuracy of network applications, billing systems, and packet inspection/filtering devices. It also allows modeling of the customer experience when accessing these applications.

The IP Data Test Application consists of two functional capabilities. First, it provides the ability to create and execute stateful data transactions. An easy-to-use data flow editing function allows the user to create custom messages and message sequences. These data transactions can interwork with real application servers or an emulated server. This allows the user to determine the application server or inspection device performance in terms of, among other things, latency, transactions per second, and throughput in packets and bits per second. The ability to create these stateful data flows can be used with any of the Landslide® applications, such as UMTS, GPRS, CDMA, WiMax, LTE or Mobility, in which the emulated client needs to send and receive stateful data.

The IP Data Test Application also provides a stand alone test application in which the stateful data flows can be executed in the absence of an access network. The Landslide® Data application allows the use of all of the advanced data types directly over an Ethernet interface including IP/Ethernet or IP/PPPoEthernet. This allows testing of content-based billing systems, application servers, or inspection/filtering devices in a standalone mode. Additionally the stand alone application can simulate a NAS device to interwork with a AAA server as well as emulating a DHCP client.

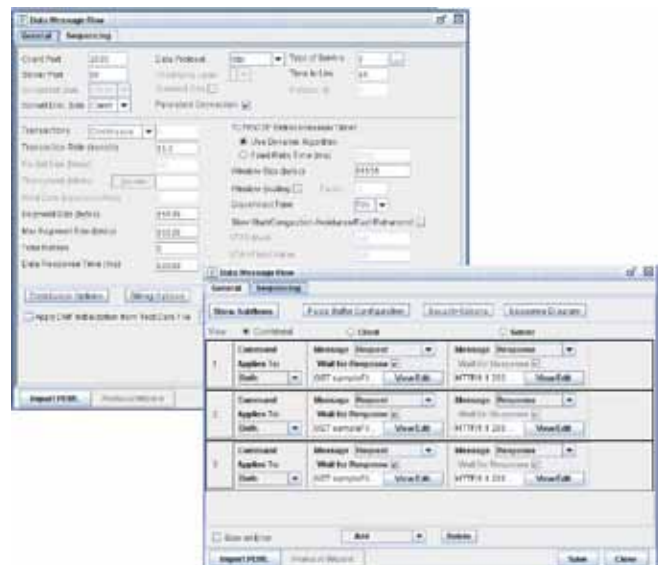
APPLICATIONS

- Validate system scalability and identify capacity limits
- Measure data performance
- Characterize system before trial/delivery
- Identify performance ceilings
- Enable accurate capacity planning

FEATURES & BENEFITS

- TCL Interface allows the user to control/monitor the Landslide® from a higher level management system, thus making it possible to compile specific test reports for both the emulation (Landslide®) and the device under test
- Realistic, real-world simulations allow equipment vendors to accurately specify the performance characteristics of their equipment under real-world conditions
- Stateful data transactions allow the user to determine the application server performance in terms of latency and transactions per second, while providing testing and benchmarking of content-based billing systems
- Message Flow Builder is a highly flexible and futureproof message flow editing tool – The user has the option to modify one of the provided data flows, modify the message sequence, add new messages, or create a whole new data flow, specifying the messages to be used and the sequence of the transactions

Data Message Flow Builder



SPIRENT LANDSLIDE IP DATA TEST APPLICATION

FEATURES & BENEFITS (CONTINUED)

- Unmatched scalability allows user to simulate subscriber loads ranging from a small rural town to the largest metropolitan city
- With a standard Web browser interface, there is no need to load software onto use equipment
- Emulation of multiple network elements allows the user to test in a variety of network topologies providing more effective utilization of lab equipment and reducing capital expenditure and ongoing support costs associated with a test lab
- Automation control allows the user to run many test cases simultaneously or serially on multiple Landslide test servers, creating real-world scenarios for heavy load and long duration stability tests
- Landslide Test Server (without performance accelerator)
 - 400,000 simultaneous sessions
 - Up to 5.6 Gbps of bearer traffic
 - Activate/deactivate up to 1,000 sessions per second
 - Up to 3 simultaneous users per test server Emulate up to 1,000 AAA NASs and 1 DHCP Relay Agent
- Landslide Test Server Ethernet ports
 - 4-port 10/100/1000Base-T NIC (P/N L-NIC-22)
 - 4-port 10/100/1000Base-SX NIC (P/N L-NIC-11)
 - Single-port 10 Gigabit XF SR NIC (P/N L-NIC-10)
- Protocols Supported
 - HTTP 1.0 and 1.1
 - FTP
 - WAP 1.x and 2.0 (WSPand HTTP)
 - POP3
 - RTSP
 - RTP
 - Wireless Village Client Server Protocol
 - Custom Protocols
 - TFTP
 - SMTP
 - IMAP
 - RTCP
 - MMS
 - SIP

TECHNICAL SPECIFICATIONS

- Test Activities
 - Capacity Test
 - Session Loading
 - Intra-PDSN Mobility
- Landslide Manager
 - Up to 125 user accounts
 - Up to 48 simultaneous users
 - Up to 32 Landslide test servers

ORDERING INFORMATION

Description	Part Number
LANDSLIDE IP DATA APPLICATION - Adds IP Data Application to an existing Landslide Test System. Landslide Manager required.	L-APP-007
DYNAMIC IPSEC EMULATION - Adds IPsec emulation to an existing Landslide Test System. IPsec accelerator must be ordered separately. Landslide Manager required.	L-FT-004
LANDSLIDE IPSEC ACCELERATOR CARD - Provide hardware accelerated IPsec processing for Landslide Test Server. Requires L-FT-004 Dynamic IPsec Emulation feature. See sales rep for more information.	L-ACC-004
DATA THROUGHPUT ACCELERATOR LICENSE - Improves test server data throughput for Lanslide Test Applications. Price per test server.	L-FT-032-A
PERFORMANCE ACCELERATOR LICENSE - Improves test server data throughput and control plane performance for mobility test applications. Price per test server.	L-FT-032-B

SPIRENT SERVICES

Spirent Global Services provides a variety of professional services, support services and education services — all focused on helping customers meet their complex testing and service assurance requirements. For more information, visit the Global Services' Web site at www.spirentcom.com/gs or contact your Spirent sales representative.

AMERICAS 1-800-SPIRENT • +1-818-676-2683 • sales@spirent.com

EUROPE AND THE MIDDLE EAST +44 (0) 1293 767979 • emeainfo@spirent.com

ASIA AND THE PACIFIC +86-10-8518-2539 • salesasia@spirent.com

© 2010 Spirent Communications, Inc. All of the company names and/or brand names and/or product names referred to in this document, in particular the name "Spirent" and its logo device, are either registered trademarks or trademarks pending registration in accordance with relevant national laws. All rights reserved. Specifications subject to change without notice. Rev. B 01/10

